

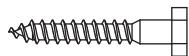
EN Installation manual for Solight 1MK40

1. Technical Parameter

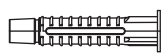
Max VESA: 600×400.

2. Parts List

Please check the parts in the package in comparison with the following list, make sure all of the parts are in the package. Never use defective parts, never replace part with different specification.



(A) M7x80 Self-tap Screw (6)



(B) 10x60 Plastic Anchor (6)



(C) Φ8 Flat washer (10)



(D) Φ6 Flat washer (4)



(E) 12mm Plastic Sleeve (4)



(F) M6x25 screws (4)



(G) M8x25 screws (4)



(H) M6x8 screws (8)



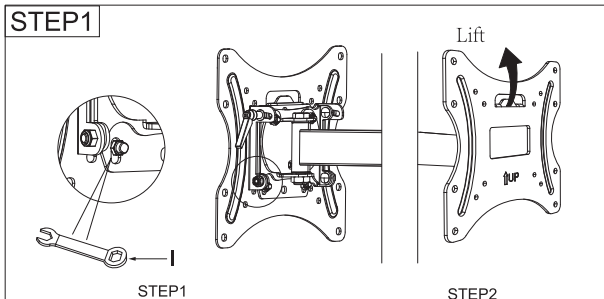
(I) Φ6 Flat washer (8)



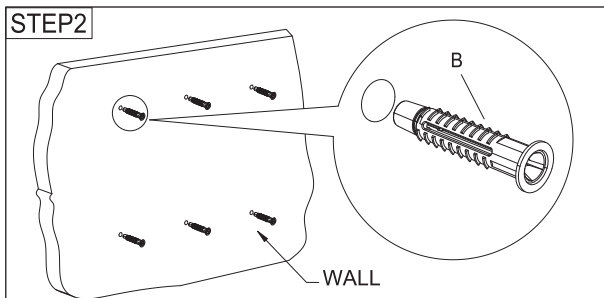
(J) 10mm Outside Wrench

3. Installation and operation instructions

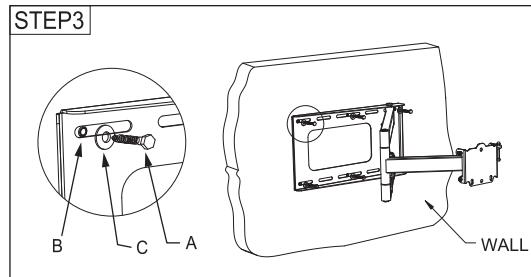
Note: please read the instructions carefully before installation!



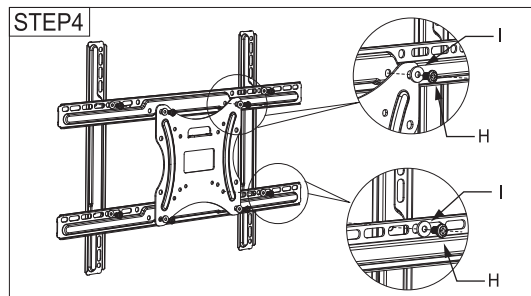
Step 1:
Unscrew 2 Pcs of nuts at the back of the faceplate. Lift up and take faceplate.



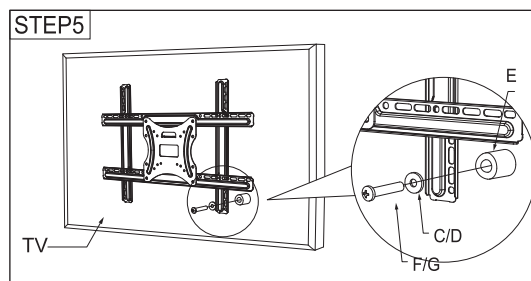
Step 2:
Use the wall plate as a template to drill six holes of dia. 10mm and 80mm depth in the wall. Then wedge six plastic anchors into the holes.



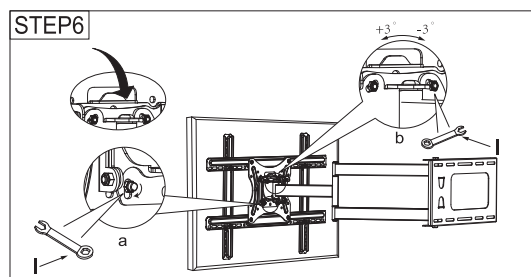
Step 3:
Fix the wall dead plate with six bolts to install the wall fixed installation for the panel TV on the vertical wall.



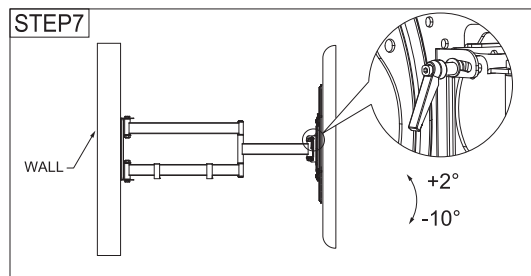
Step 4:
Select the M6x8 screws to fix the adaptors with the TV Plate



Step 5:
Install the monitor/TV to the front plate with suitable screws selected from the parts bag.



Step 6:
a: Align the TV and the front plate with the fixed screw then tighten the nuts.
b: After the TV is installed, use the level adjustment to make sure the TV is level before moving forward.



Step 7:
The knobs should be loosened before adjusting the angle of view for the flat panel TV between +2° ~ -10°. After the position has been determined, the knobs should be screwed down furthest.

Producer: Solight Holding, s.r.o.
Na Brně 1972, Hradec Králové 500 06
info@solight.cz